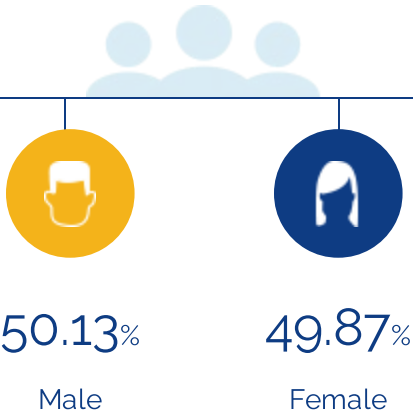


## People

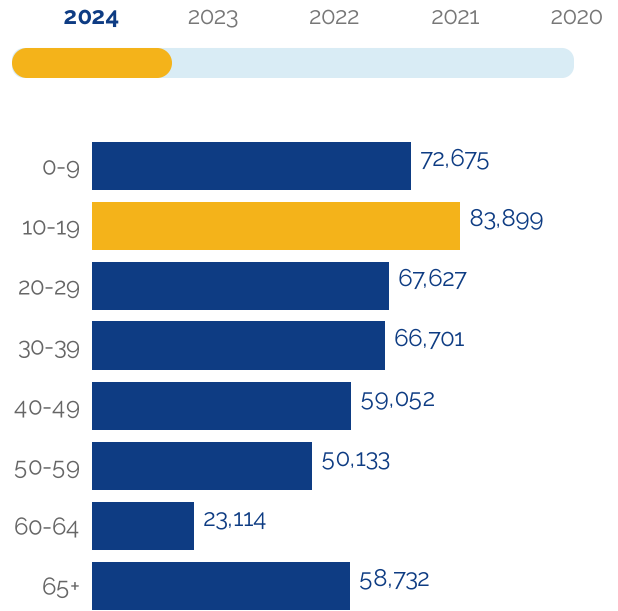
The total population of Tulare County is 485,048. The median age is 31.42

**485,048**

Total Population



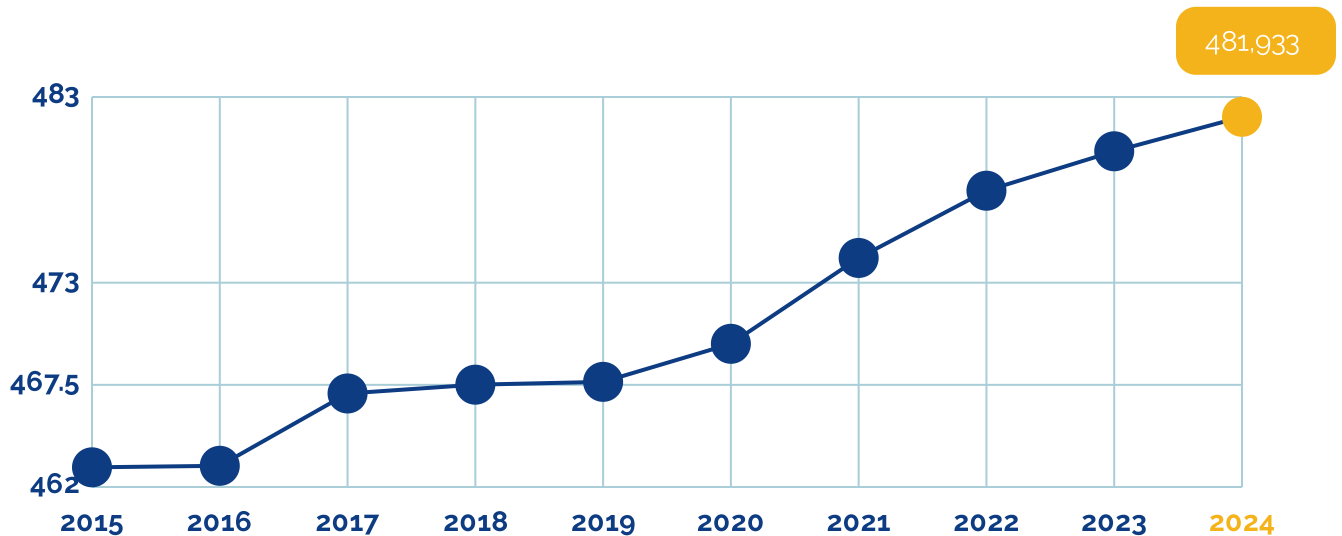
### Age Distribution



### Median Age

**31**

### Population Growth (in thousands)



Data Source: Applied Geographic Solutions and FT Locations 2024, TaxFoundation.Org 2021 and FT Locations research.



## Educational Attainment

25.56% of the population in Tulare County have an associate's degree or higher. 74.32% have a high school degree or higher.



< Grade 9

**16.41%**



Grade 9-12

**9.26%**



High School

**27.31%**



Some College

**21.45%**



Assoc Degree

**9.48%**



Bach Degree

**10.02%**



Grad Degree

**6.06%**



offer associate's Degree or Certificate



offer Bachelor's Degree or Higher

# Labor Force

Tulare County has a labor force of 232,848 people, with an unemployment rate of 10.2%.

232,848

Labor Force

10.2%

Unemployment Rate

▼ -1%

Unemployment Rate  
Change (1 year)

## Talent

What are the largest job counts by occupation?

Office and  
Administrative  
support



11.84%

12,781

Sales



11.32%

12,219

Executive,  
Managers, and  
Administrators



9.27%

10,009

Education,  
Training/Library



7.6%

8,202

Food Preparation,  
Serving

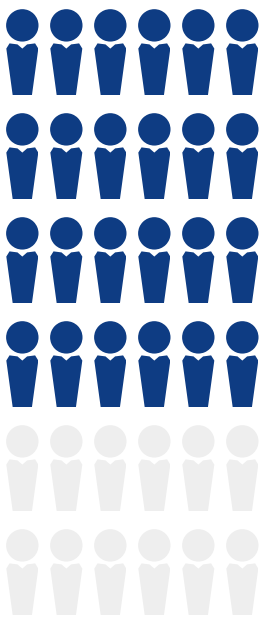


5.8%

6,260

Total Employees

120,305



2024  
2023  
2022  
2021  
2020

The work distribution of total employees in Tulare County is:



37%

Blue Collar



62%

White Collar

Total Establishments

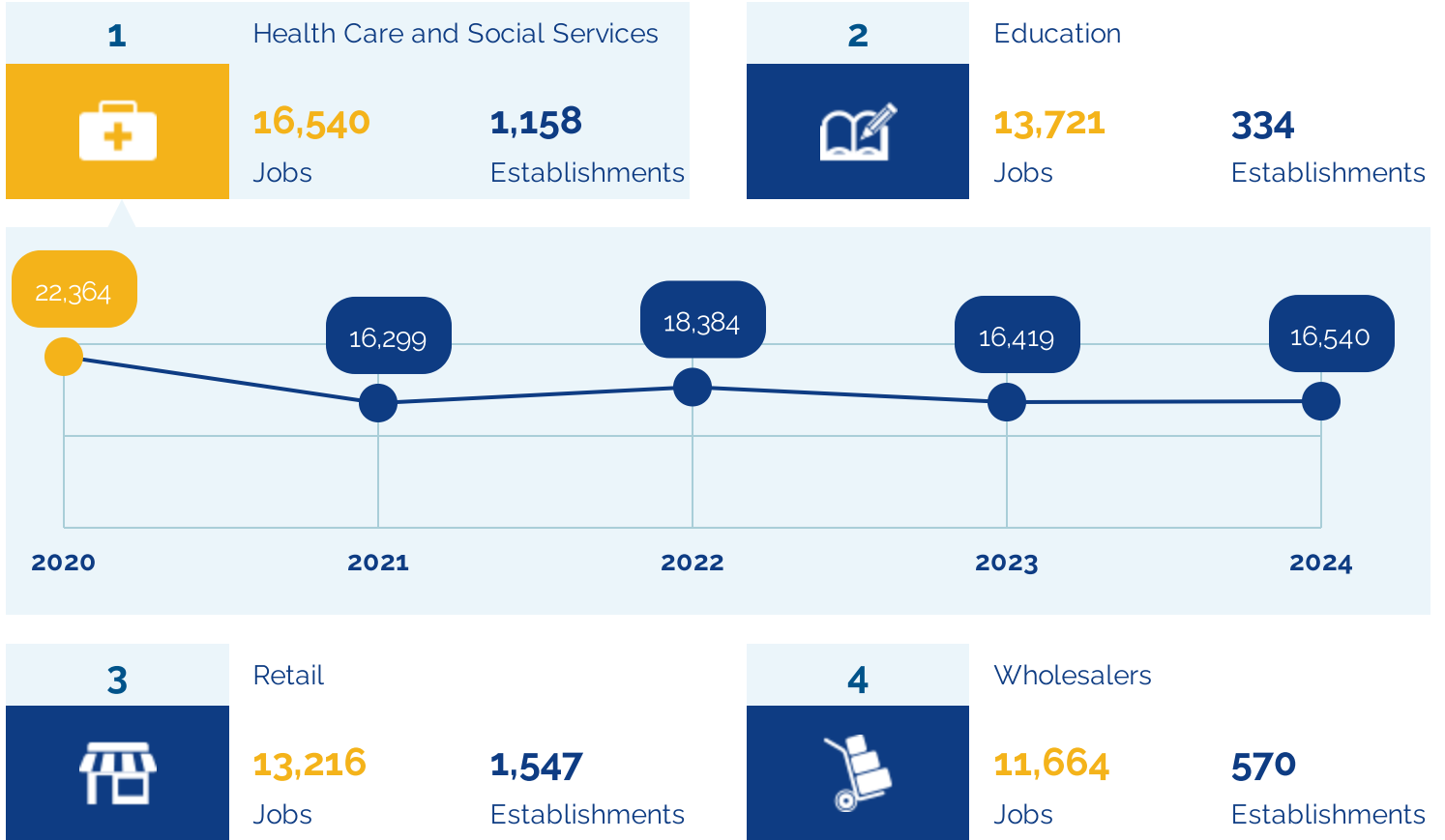
10,498



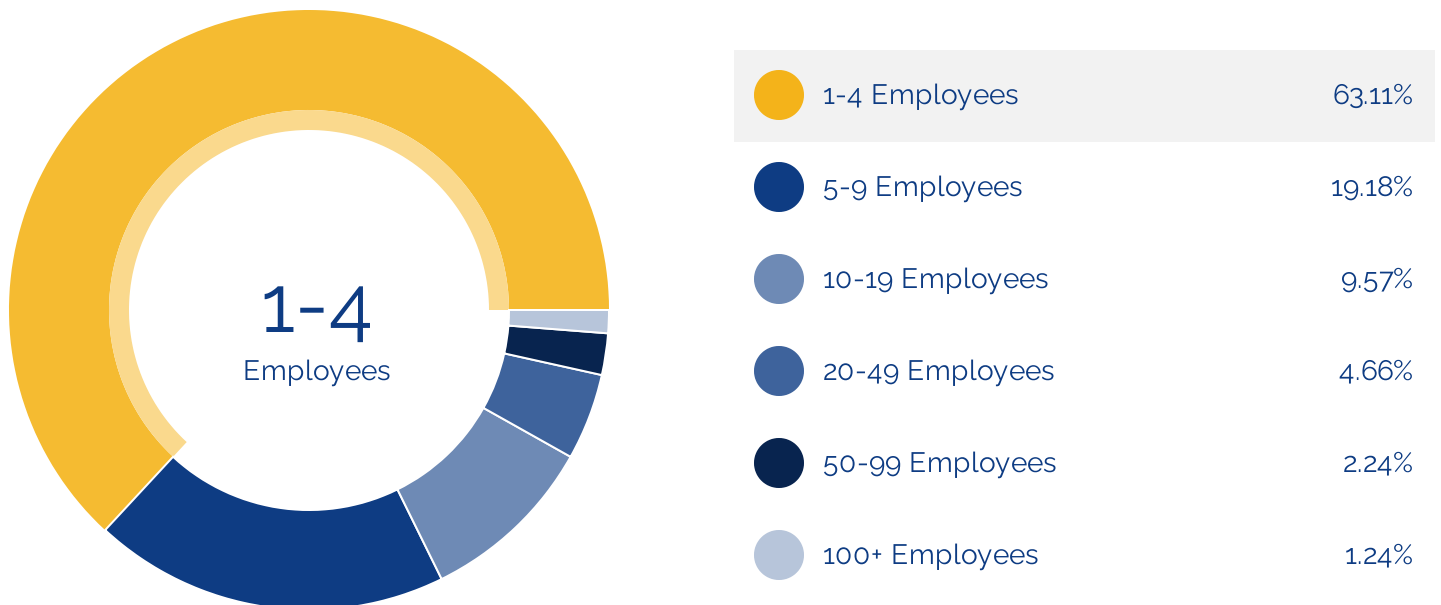
## Businesses and Jobs

Tulare County has a total of 10,498 businesses. In 2024, the leading industries in Tulare County were Health Care and Social Services, Education, Retail, and Wholesalers.

What are the top industries by jobs?



How many employees do businesses in Tulare County have?



# Income and Spending

Households in Tulare County earn a median yearly income of \$71,866. 33.83% of the households earn more than the national average each year. Household expenditures average \$103,089 per year. The majority of earnings get spent on Tax and Retirement (Total), Shelter (Total), Transportation (Total), Grocery (Total), and Health Care (Total).

**\$71,866**

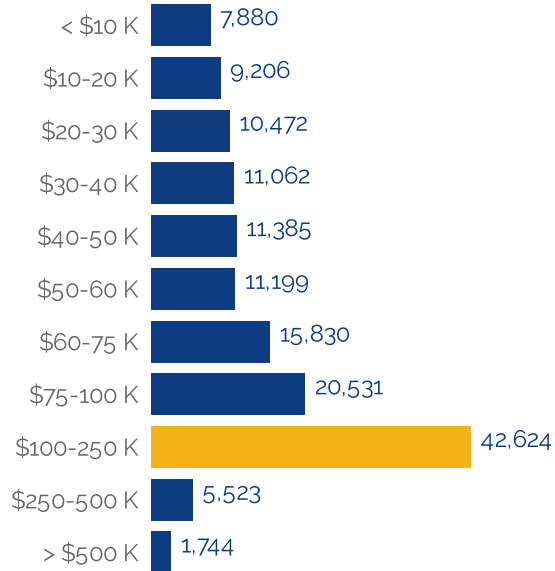
Median Household Income

**0%** more than the county

**29%** less than the state

**12%** less than the nation

## Income Distribution



## How do people spend most of their money?

PER HOUSEHOLD

Tax and Retirement (Total)



**\$22,486**

Shelter (Total)



**\$17,608**

Transportation (Total)



**\$16,356**

Grocery (Total)



**\$7,638**

Health Care (Total)



**\$6,678**

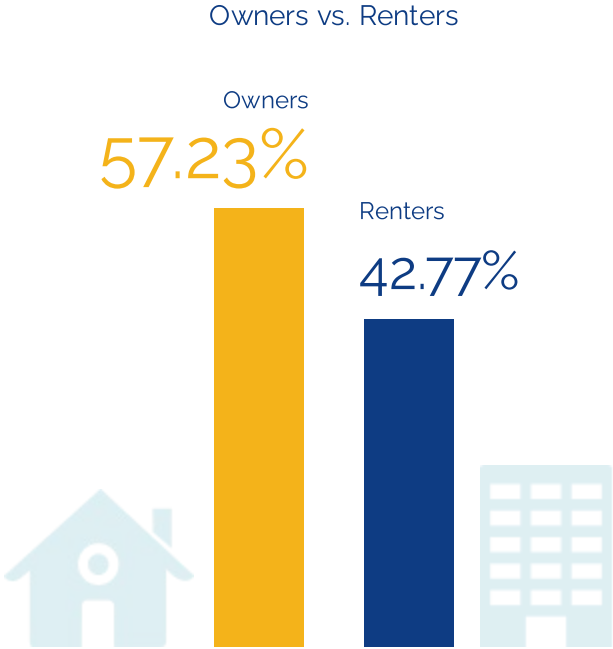


**\$103,089**

Average Household Expenditure

# Housing

There are 14% more households who own their homes than there are renters.



# Transportation

Residents spend an average of 21 minutes commuting to work. Tulare County is served by 36 airports within 50 miles. Rail can be accessed within the community. Interstates can be accessed within the community.



21min

Commute Travel Time



7 + 36(+50 miles)

Airports in Community



Interstate

In Community



Freight Rail

In Community

# Taxes

Top State Corporate Income Tax

8.84%

Top State Corporate Capital Gains Tax

8.84%

Top State Personal Income Tax

13.3%

Top State Personal Capital Gains Tax

13.3%

State Sales Tax

7.25%