

San Joaquin County

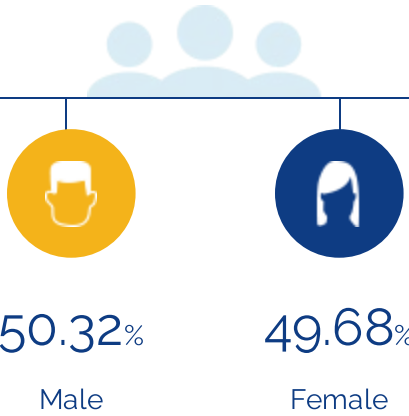


People

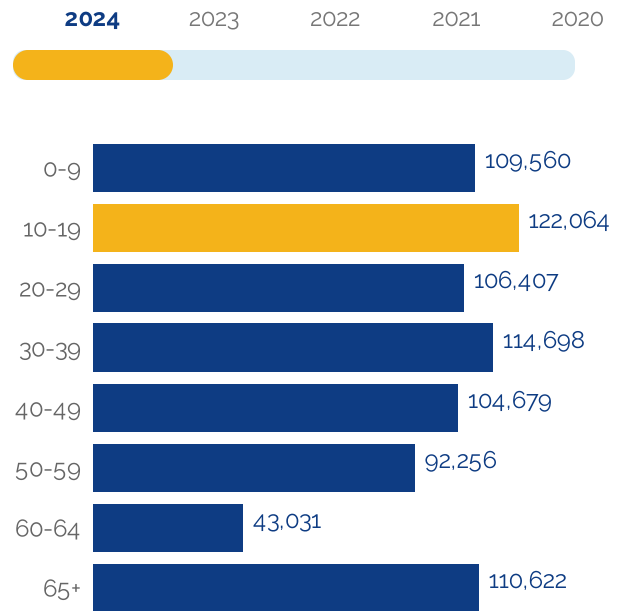
The total population of San Joaquin County is 803,317. The median age is 34.51

803,317

Total Population



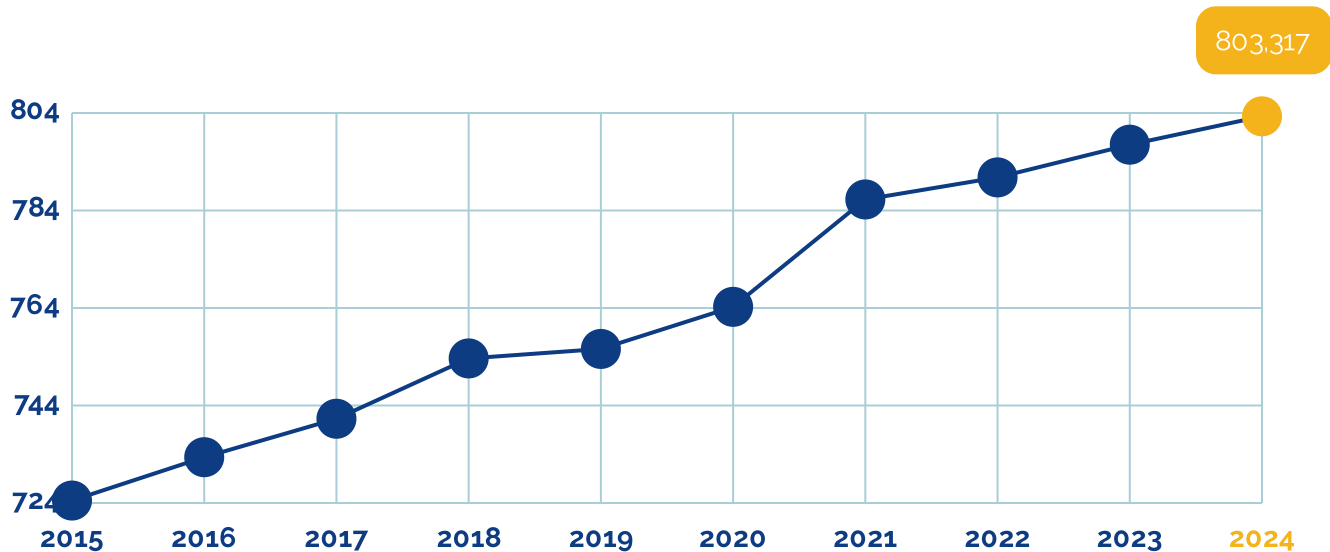
Age Distribution



Median Age

35

Population Growth (in thousands)



Data Source: Applied Geographic Solutions and FT Locations 2024, TaxFoundation.Org 2021 and FT Locations research.

Educational Attainment

30.9% of the population in San Joaquin County have an associate's degree or higher. 81.25% have a high school degree or higher.



< Grade 9
11.22%



Grade 9-12
7.53%



High School
28.6%



Some College
21.75%



Assoc Degree
9.13%



Bach Degree
14.81%



Grad Degree
6.96%



offer associate's Degree or Certificate



offer Bachelor's Degree or Higher

Labor Force

San Joaquin County has a labor force of 386,165 people, with an unemployment rate of 6.4%.

386,165

Labor Force

6.4%

Unemployment Rate

▼ -0.4%

Unemployment Rate
Change (1 year)

Talent

What are the largest job counts by occupation?

Office and
Administrative
support



12.87%

26,389

Executive,
Managers, and
Administrators



10.46%

21,463

Sales



10.32%

21,172

Education,
Training/Library



6.68%

13,701

Transportation
Workers

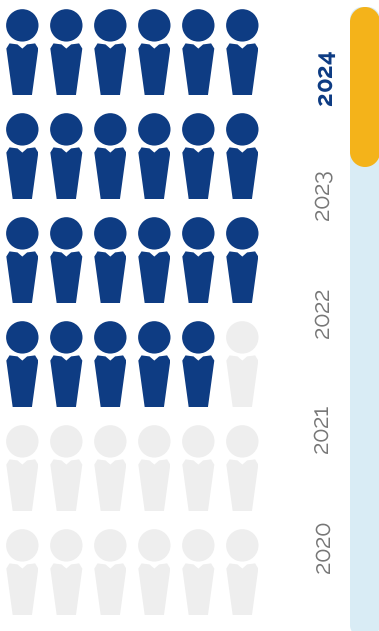


5.48%

11,233

Total Employees

205,120



The work distribution of total employees in San Joaquin County is:



36%

Blue Collar



63%

White Collar

Total Establishments

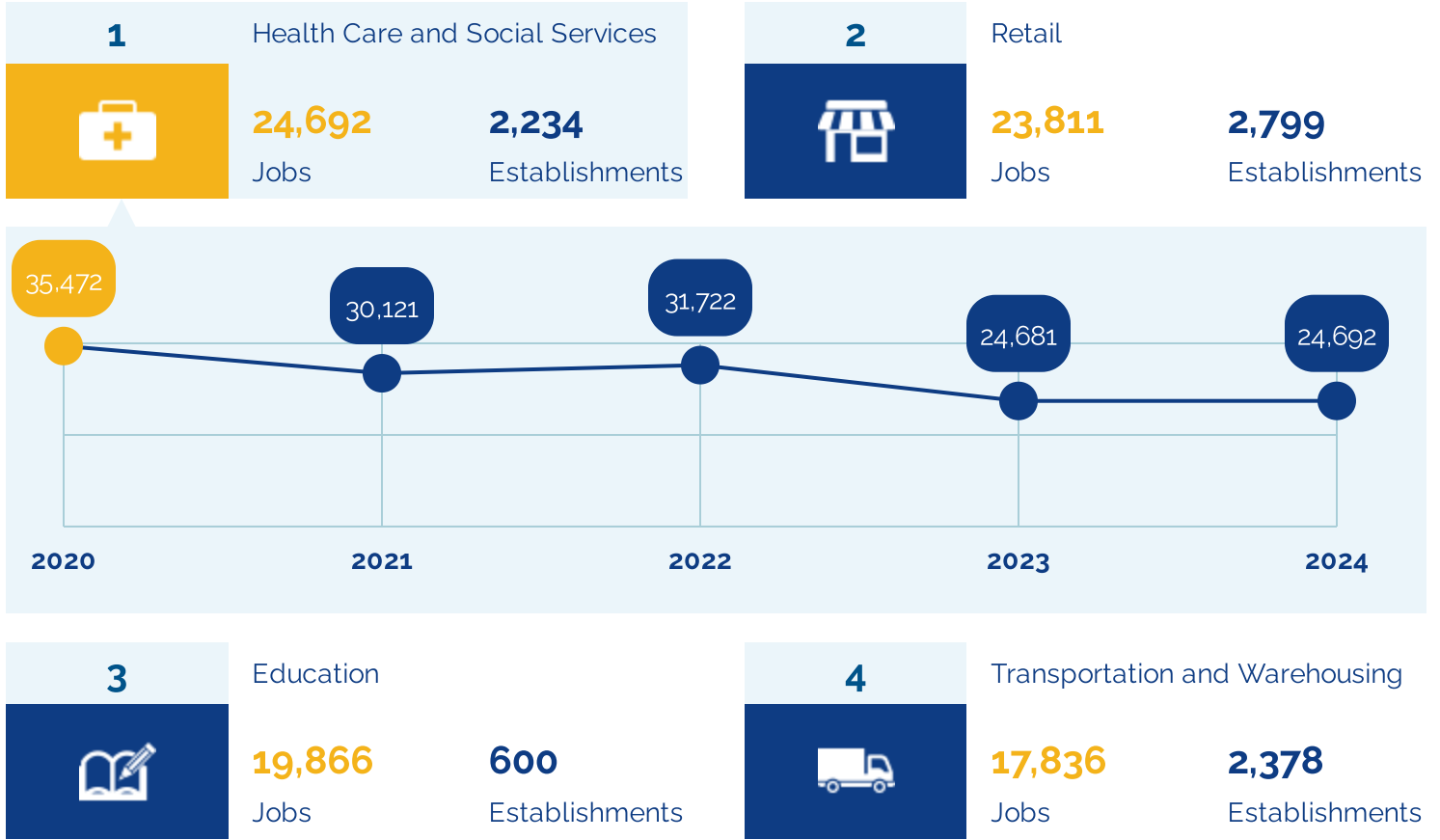
22,368



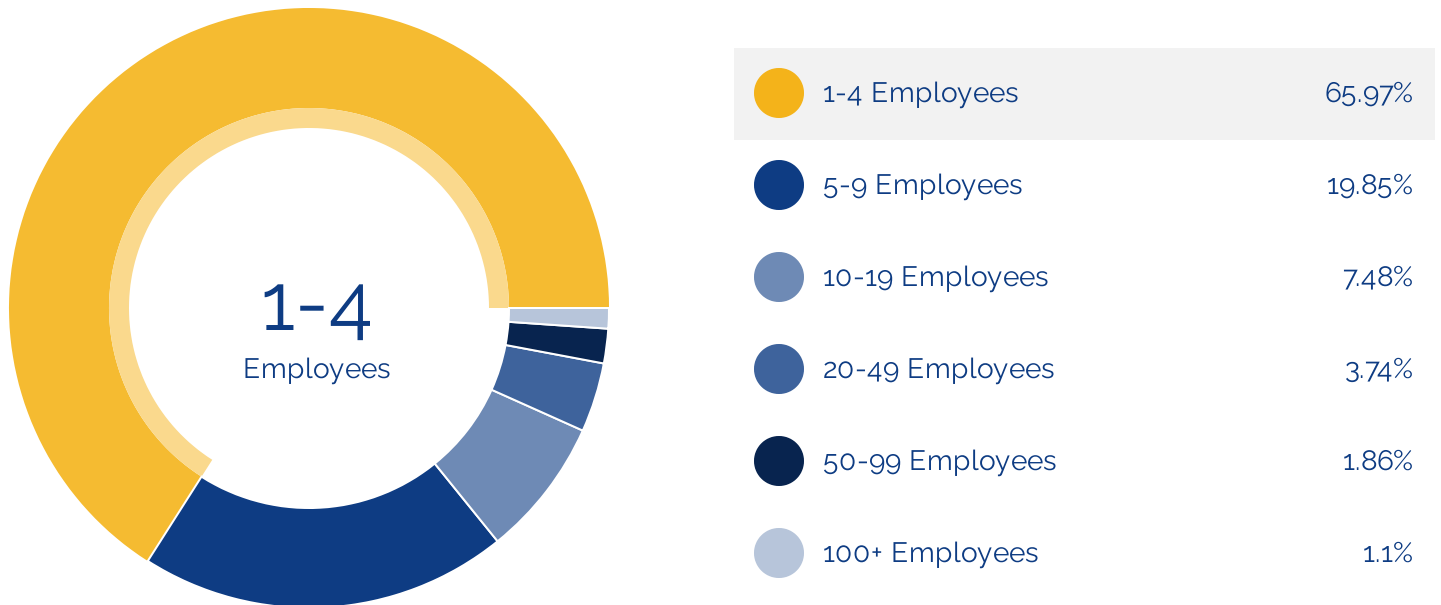
Businesses and Jobs

San Joaquin County has a total of 22,368 businesses. In 2024, the leading industries in San Joaquin County were Health Care and Social Services, Retail, Education, and Transportation and Warehousing.

What are the top industries by jobs?



How many employees do businesses in San Joaquin County have?



Data Source: Applied Geographic Solutions and FT Locations 2024, TaxFoundation.Org 2021 and FT Locations research.

Income and Spending

Households in San Joaquin County earn a median yearly income of \$89,245. 43.88% of the households earn more than the national average each year. Household expenditures average \$78,817 per year. The majority of earnings get spent on Shelter, Transportation, Food and Beverages, Health Care, and Utilities.

\$89,245

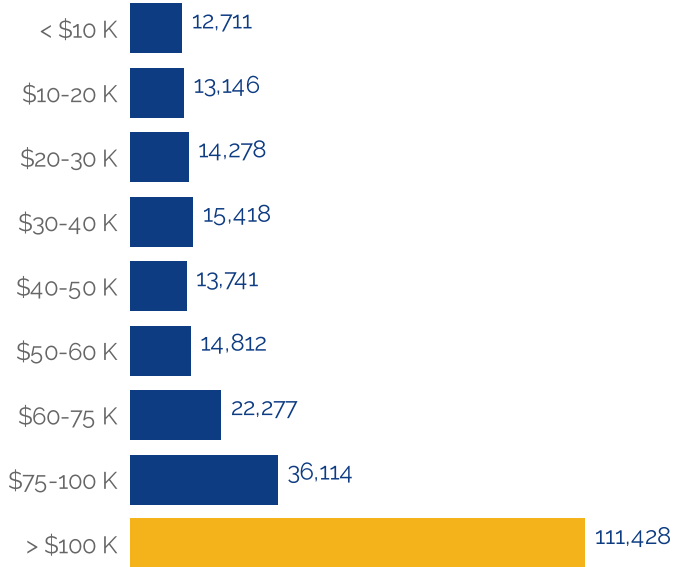
Median Household Income

0% more than the county

9% less than the state

13% more than the nation

Income Distribution



How do people spend most of their money?

PER HOUSEHOLD

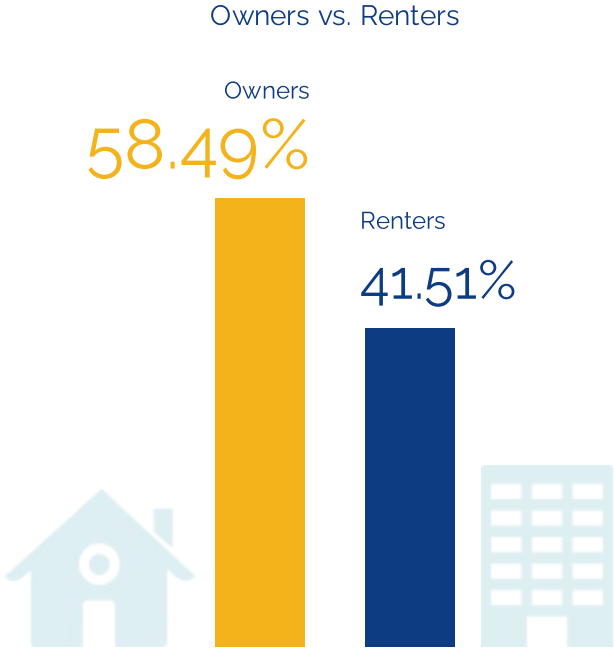


\$78,817

Average Household Expenditure

Housing

There are 17% more households who own their homes than there are renters.



Transportation

Residents spend an average of 30 minutes commuting to work. San Joaquin County is served by 55 airports within 50 miles. Rail can be accessed within the community. Interstates can be accessed within the community.



30min

Commute Travel Time



6 + 55(+50 miles)

Airports in Community



Interstate

In Community



Freight Rail

In Community

Taxes

Top State Corporate Income Tax

8.84%

Top State Corporate Capital Gains Tax

8.84%

Top State Personal Income Tax

13.3%

Top State Personal Capital Gains Tax

13.3%

State Sales Tax

7.25%