

Merced County

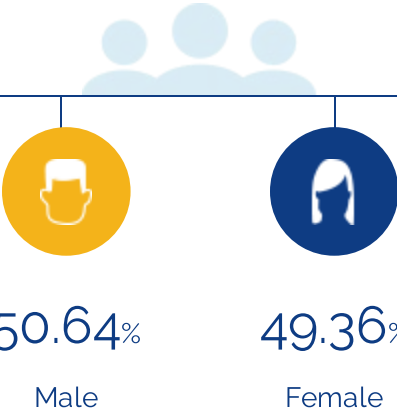


People

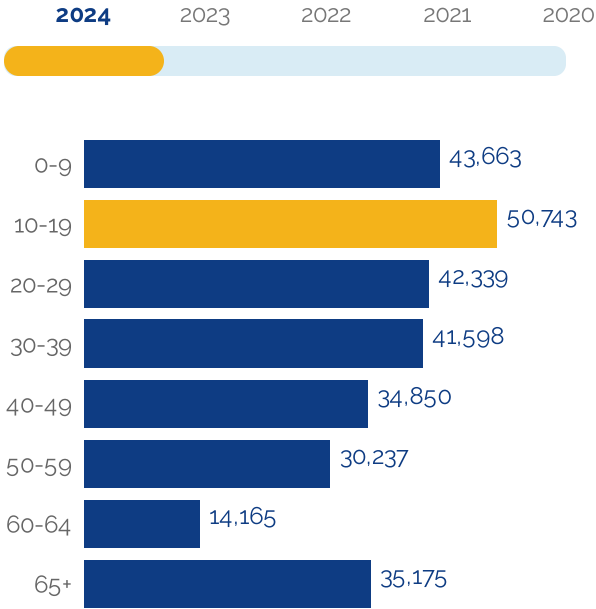
The total population of Merced County is 292,770. The median age is 31.22

292,770

Total Population



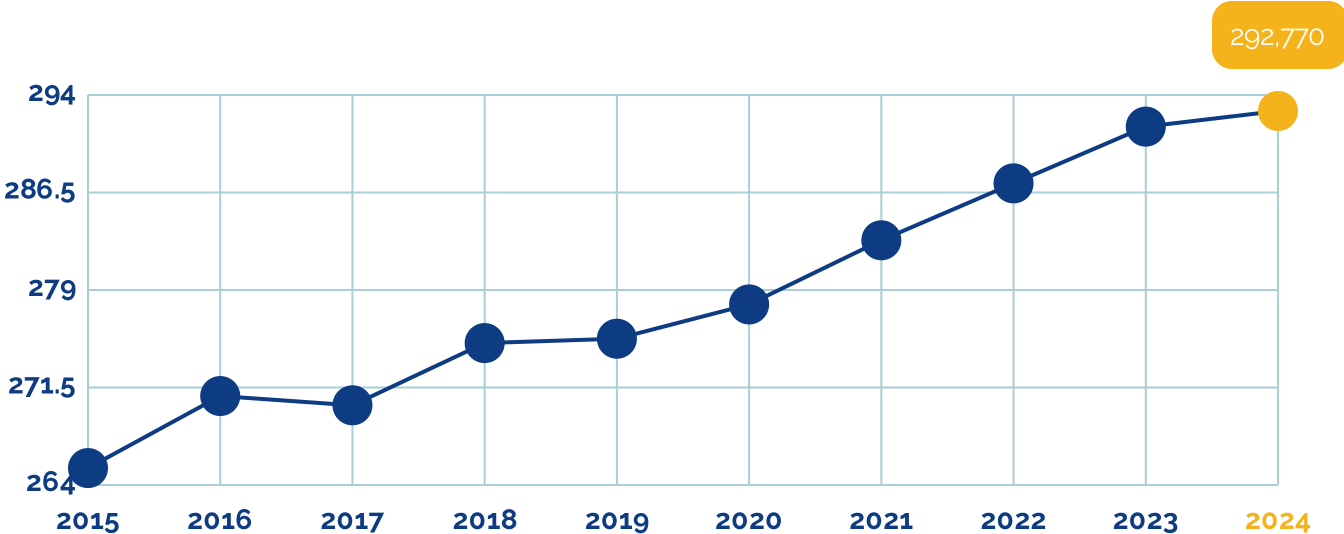
Age Distribution



Median Age

31

Population Growth (in thousands)



Data Source: Applied Geographic Solutions and FT Locations 2024, TaxFoundation.Org 2021 and FT Locations research.

Educational Attainment

23.42% of the population in Merced County have an associate's degree or higher. 72.96% have a high school degree or higher.



< Grade 9

16.34%



Grade 9-12

10.7%



High School

29.01%



Some College

20.53%



Assoc Degree

7.92%



Bach Degree

10.8%



Grad Degree

4.7%



offer associate's Degree or Certificate



offer Bachelor's Degree or Higher

Labor Force

Merced County has a labor force of 136,994 people, with an unemployment rate of 9.5%.

136,994

Labor Force

9.5%

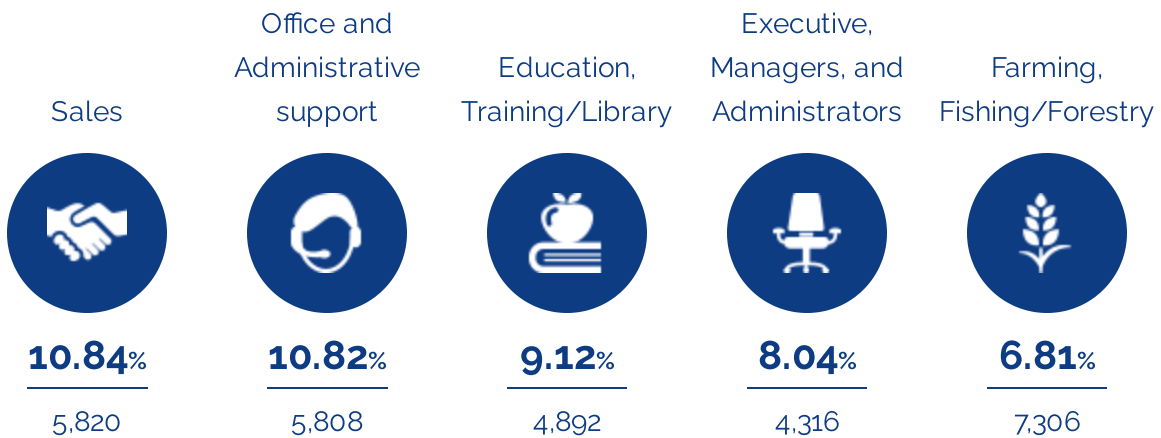
Unemployment Rate

▼ -0.7%

Unemployment Rate
Change (1 year)

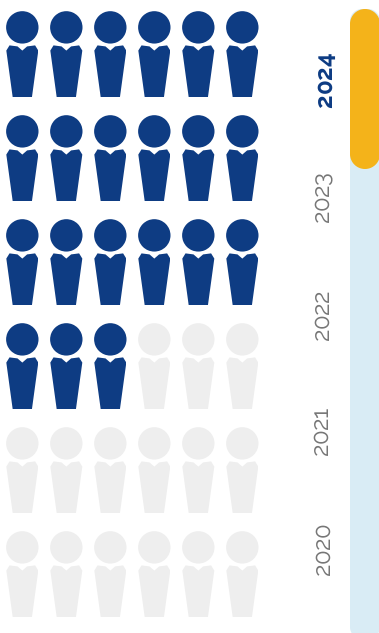
Talent

What are the largest job counts by occupation?



Total Employees

53,666



The work distribution of total employees in Merced County is:



Total Establishments

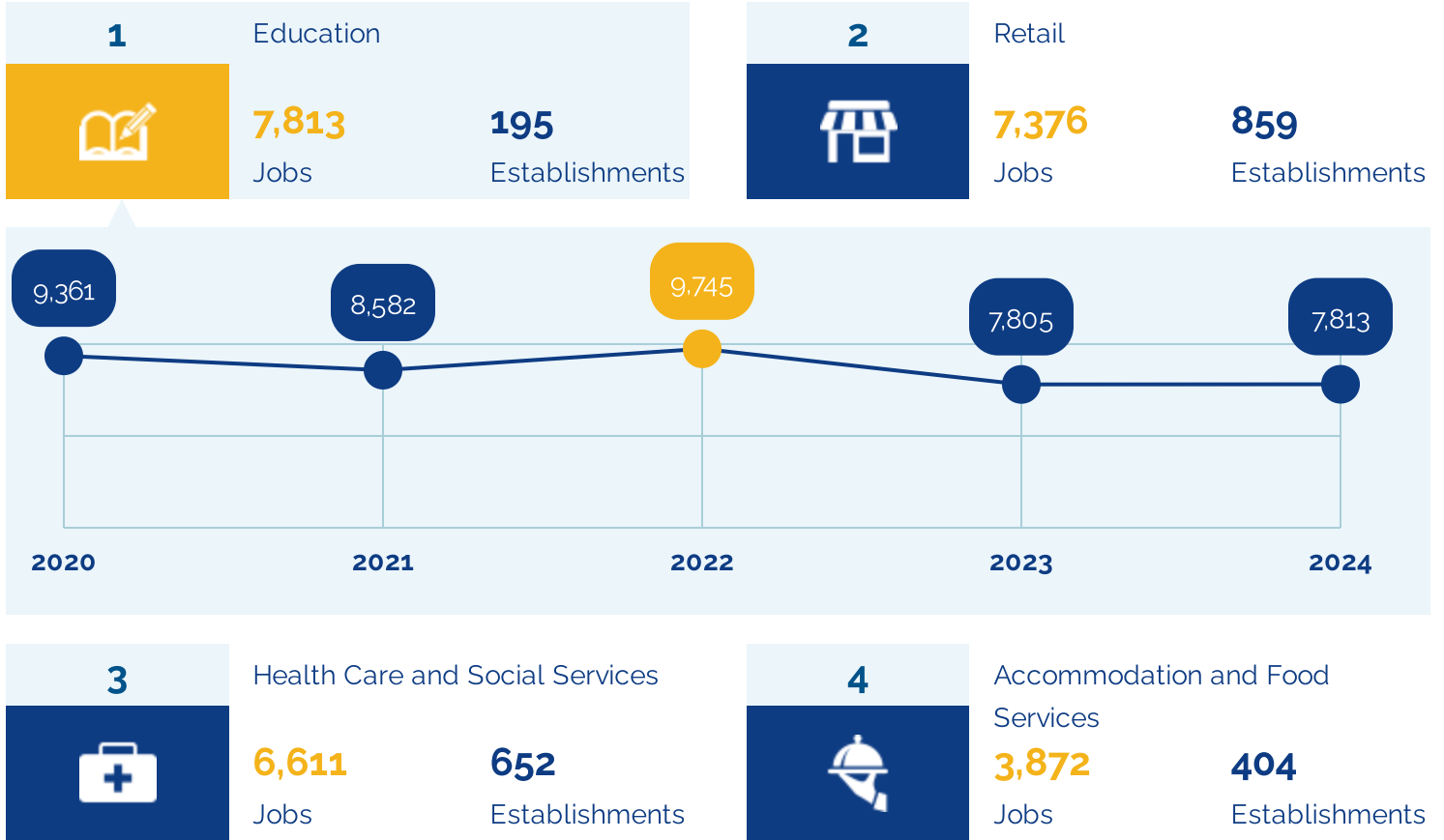
5,999



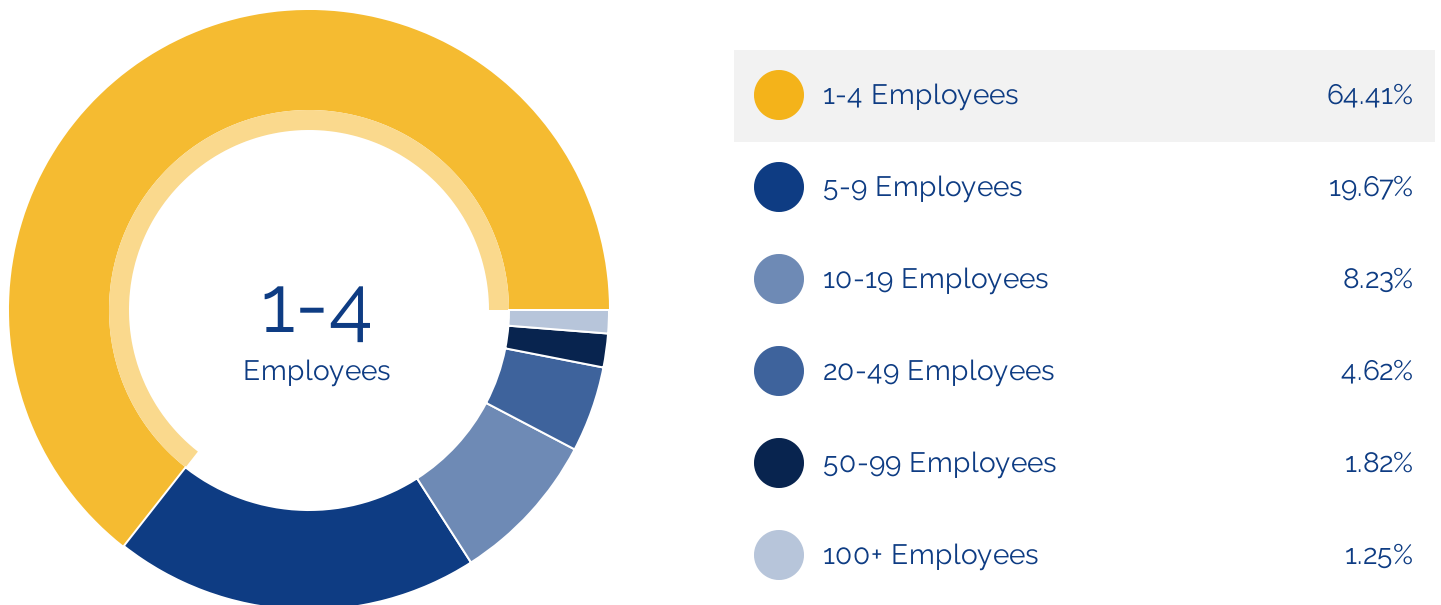
Businesses and Jobs

Merced County has a total of 5,999 businesses. In 2024, the leading industries in Merced County were Education, Retail, Health Care and Social Services, and Accommodation and Food Services.

What are the top industries by jobs?



How many employees do businesses in Merced County have?



Income and Spending

Households in Merced County earn a median yearly income of \$69,399. 31.31% of the households earn more than the national average each year. Household expenditures average \$67,878 per year. The majority of earnings get spent on Shelter, Transportation, Food and Beverages, Health Care, and Utilities.

\$69,399

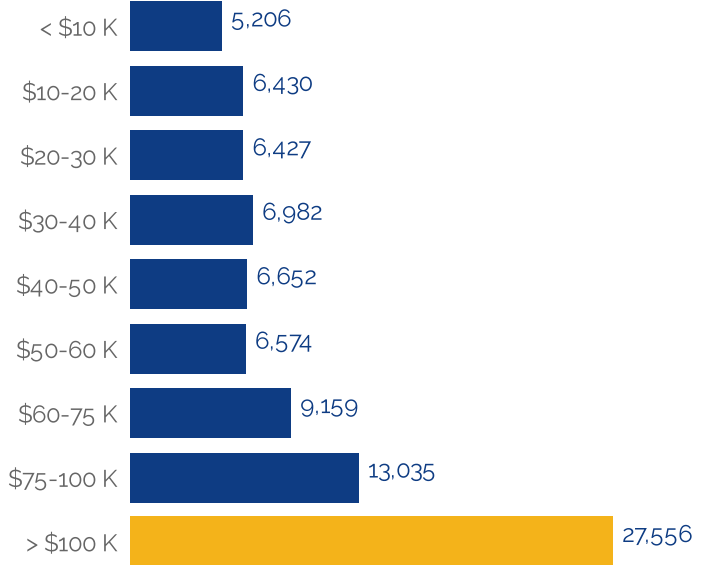
Median Household Income

0% more than the county

29% less than the state

13% less than the nation

Income Distribution



How do people spend most of their money?

PER HOUSEHOLD

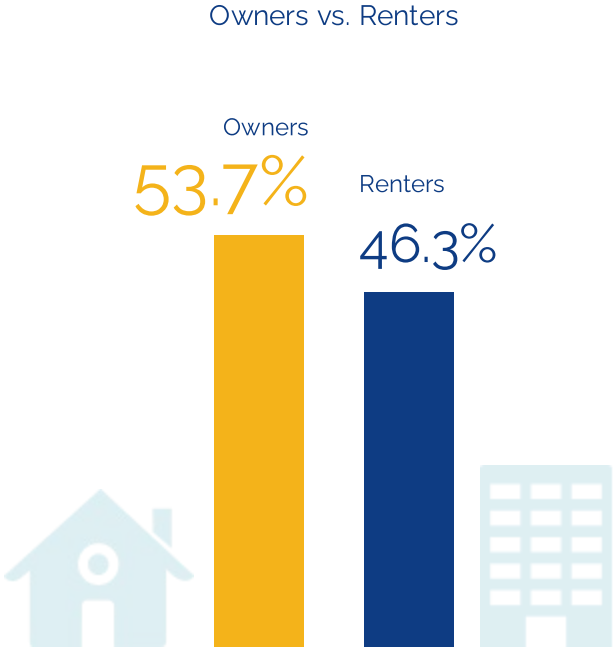


\$67,878

Average Household Expenditure

Housing

There are 7% more households who own their homes than there are renters.



Transportation

Residents spend an average of 26 minutes commuting to work. Merced County is served by 37 airports within 50 miles. Rail can be accessed within the community. Interstates can be accessed within the community.



26^{min}

Commute Travel Time



5 + 37^(+50 miles)

Airports in Community



Interstate

In Community



Freight Rail

In Community

Taxes

Top State Corporate Income Tax

8.84%

Top State Corporate Capital Gains Tax

8.84%

Top State Personal Income Tax

13.3%

Top State Personal Capital Gains Tax

13.3%

State Sales Tax

7.25%